



EMS-GLOBAL

**COMPANY
PROFILE**

WWW.EMSGLOBAL.CO.TZ

ABOUT US

EMS-GLOBAL LIMITED

is a Business and Investment Consulting Firm established in 2017 under the Companies Act 2002 with registration No. 137725, Tax Identification

Number 134-903-279 and Value Added Tax

Registration Number (VRN)

40-050044-U

EMS-GLOBAL
"The Home of Professionalism"

VISION

To provide corporate services that all institutions need for growth

MISSION

To equip companies of all sizes around the world with sound corporate frameworks and strategies for excellence

FACTS

"Over the next ten years the number of traditional institutions surviving across the world will be reduced by at least 80% through a mix of closures, lack of excellence, planning and actual resources projections" (Global Excellence Survey, 2019).

VALUES & COMMITMENT

Corporate Culture
Excellence
Innovation
Quality Assured

COMMITMENT

We help institutions to ADD Value while reducing RISKS, to ensure Return on Investment (ROI)

Our Quality-of-Service policies ensure that our customers get ethical, efficient, and effective services for excellence.

WHAT WE DO?

We embrace a culture of excellence, return on investment, and institutional performance by offering customized optimal solutions.

Corporate Governance & Business Leadership

We will equip you to comply with all pillars of governance and make your institution lead.

Entities need ethical and capable leaders, policies, and structures, we equip institutions to build on stand-out leaders, management, corporate image, and excellence.

Business & Investment Consultancy Services

We understand that doing business is possible if solutions, expertise, information, the right team, finance, and systems are in place and are well managed.

We ADD VALUE to businesses by providing them with world-class services by our qualified professionals with extensive experience.

OTHER BUSINESS LINES

Operations & Action Research
Corporate & Management Training
Data Science, Collection, and Analysis
Business Documentation, Bids Management
Feasibility Study for Bankable Projects
Business Strategies, Planning & Bids Management

OUR BRAND

We are in several sectors trading under WAN BRANDs:
REAL ESTATE, OIL & GAS, FINANCE, SUPPLIES, AGRIBUSINESS & LOGISTICS

OUR APPROACHES

EMS-GLOBAL is aware that not necessarily one approach suits all. Therefore, we have options depending on the nature of the required services.

Hourly basis

It is face to face meeting with our Consultants who will address your cases/issues

Daily basis

Our professionals may spend a day (8 working hours) working for your task regularly

Retainer basis

The Consultants are to be (contracted) to work with your institution for the whole year.
(Quarterly Installments)

Project basis

Depends on the budget and time-frame, consultants offer specific skills/services as required

Partners/Shares

The firm to access the ownership and operate at projected profits/dividend

We accept JOINT-VENTURE and CONSORTIUM

OUR KEY EXPERTS



Associate Consultant

CPA, Esther G. Abayo, MBA
Certified Public Accountant
Over 30 years of experience in financial consultancy and projections, working with both international and local firms



Associate Consultant

Dr. Juma Makaranga, Ph.D. in International Business Management

Over 8 years in International Business Management Consultancy



Associate Consultant

Dr. Zaharan Hussein, Ph.D. in Postharvest Quality of Horticultural Crops

Over 6 years of experience in Agribusiness and capacity-building consultancy works.



Licensed Consultant

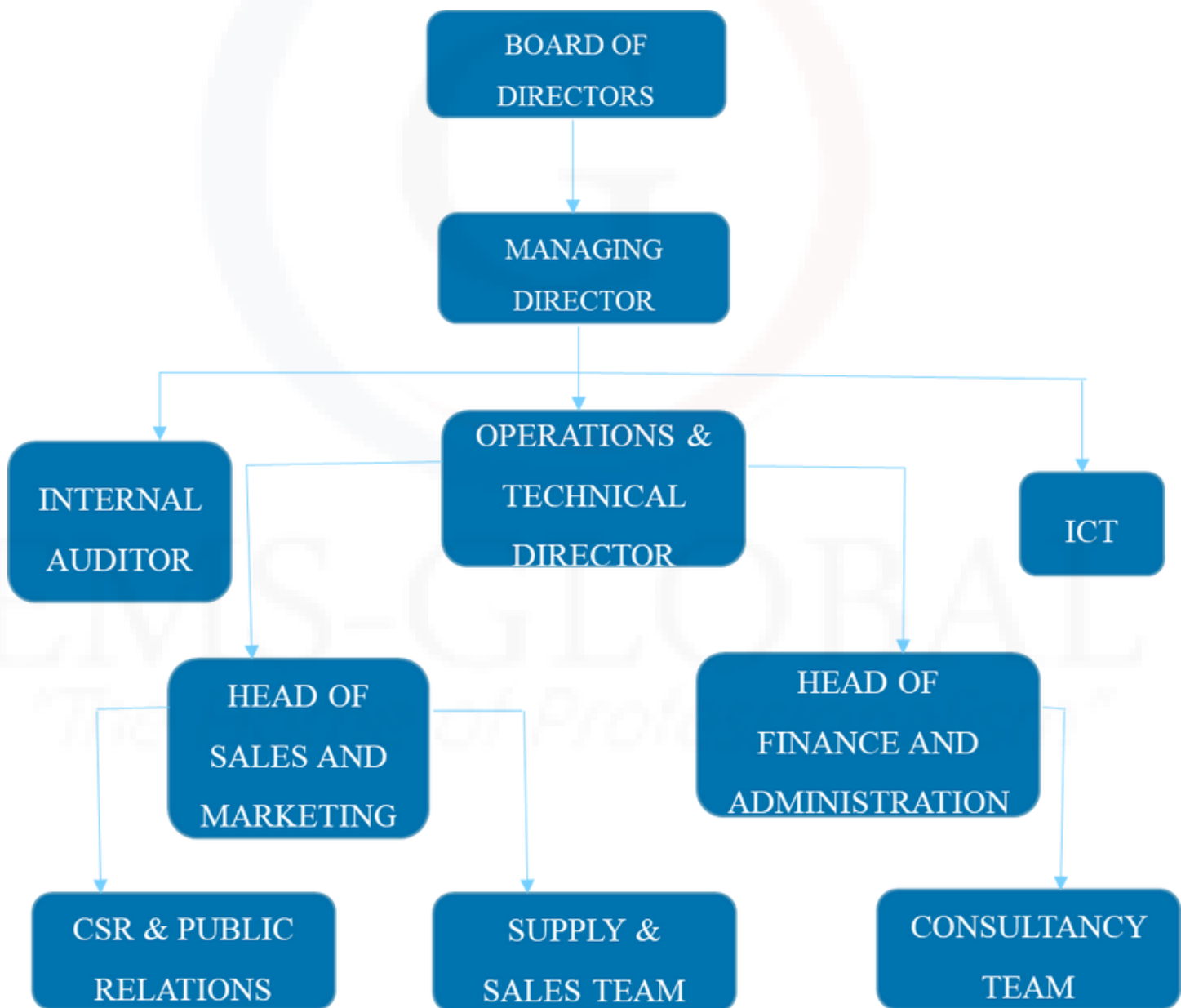
Solomon Zakayo, MBA
Ph.D. Candidate in Operations Research.

Over 8 years of experience in Management Consultancy, Corporate Governance, Bids, Investment, Excellence & Data.

OUR STRUCTURE

We understand that Corporate Governance begins with us.

We have ensured a proper chain of command and defined roles from one segment to another that are contributing to each other.



OUR EXPERIENCE

We have worked in various projects locally and internationally, improved our network, and engaged with senior executives to provide them with consulting services for their informed decision making.

Get to know more about us
www.emsglobal.co.tz

OUR REFERENCES



RIHA CO LIMITED



Parivartan Kaju House



BoP
INNOVATION
CENTER



Organizational Excellence Specialists



GLOBAL RECOGNITION

Organizational Excellence Specialists



We have licensed professionals with OES that have earned the ROES designation. The ROES designation allows us to offer training, run organizational assessments, and consult.

The Organizational Excellence Specialists consortium is devoted to developing professionals in the Organizational Excellence Framework, a platform for long-term organizational success that is applicable to any size and type of organization.

The Framework is unique in that it 'consolidates' the principles and best management practices of leading excellence models and provides "implementation guidelines" for the user.

For over 25 years, global research has validated the positive relationship between implementing an excellence model and improving organizational performance. Today, the Framework is being used by professionals in over 20 countries.

For more information, visit
www.organizationalexcellencespecialists.ca



EMS-GLOBAL

CONTACTS, ADDRESS & APPOINTMENTS

RITA TOWER, 23rd Floor,
Simu Street, City Centre,
Ilala CBD.

P.O.Box 31529 Dar es Salaam,
Tanzania

wan@emsglobal.co.tz

www.emsglobal.co.tz

Phone (Call & WhatsApp):

+255 755 999 699

Managing Director:

+255 758 999 699

LEGAL COMPLIANCE

We comply with the Laws and Business regulations of Tanzania and Global at large.

C.1

TANZANIA



Certificate of Incorporation

Section 15

No 137725

I HEREBY CERTIFY THAT

EMS-GLOBAL LIMITED

is this day incorporated under the Companies Act, 2002 and that the Company is Limited.

Given under my hand at Dar es salaam

this 11TH day of SEPTEMBER

TWO THOUSAND AND SEVENTEEN.



Princ. Asst. Registrar of Companies

CTIN: 438506

**TANZANIA REVENUE AUTHORITY****CERTIFICATE OF REGISTRATION
FOR
TAXPAYER IDENTIFICATION NUMBER (TIN)**(ISSUED UNDER SECTION 23 OF THE TAX ADMINISTRATION ACT 2015)**THIS IS TO CERTIFY THAT****EMS-GLOBAL LIMITED****HAS BEEN REGISTERED WITH THE TANZANIA REVENUE AUTHORITY
AND ASSIGNED THE TAXPAYER IDENTIFICATION NUMBER****134-903-279****WITH EFFECT FROM: 16 OCTOBER 2017****TRA LOCATION: ILALA****TAX OFFICE: UPANGA****PHYSICAL LOCATION: PLOT No. 727****STREET / AREA: SIMU STREET****OFFICIAL SEAL**
**HERBERT M.T. KABYEMELA
COMMISSIONER FOR DOMESTIC REVENUE**NOTE: THE REQUIREMENTS UNDER WHICH THIS CERTIFICATE IS ISSUED ARE STATED OVERLEAF



TANZANIA REVENUE AUTHORITY

Certificate of Registration for Value Added Tax (VAT)

(ISSUED UNDER SECTION 32(4) OF THE VALUE ADDED TAX ACT NO. 10 OF 2014)

THIS IS TO CERTIFY THAT

EMS-GLOBAL LIMITED

WHOSE TAXPAYER IDENTIFICATION NUMBER (TIN) IS

134-903-279

HAS BEEN REGISTERED FOR VALUE ADDED TAX (VAT)

AND ASSIGNED VAT REGISTRATION NUMBER (VRN)

40-050044-U

FOR BUSINESS LOCATED AT

**SIMU STREET
DAR ES SALAAM**

23 NOVEMBER 2022

WITH EFFECT FROM

GIVEN UNDER MY HAND

THIS 23rd DAY OF NOVEMBER 2022


HERBERT M.T. KABWEMELA

COMMISSIONER FOR VAT



NOTE: THE REQUIREMENTS UNDER WHICH THIS CERTIFICATE IS ISSUED ARE STATED OVERLEAF



B6x 31529
CL 137725

145/20457/23

TFN. 226
(Rev. 2/96)



JAMHURI YA MUUNGANO WA TANZANIA

2019001905169

LESENI YA BIASHARA BID 123279

B 4220457

(Imetolewa chini ya Sheria ya Leseni za Biashara Na. 25 ya Mwaka
1972 marekebisho ya mwaka 1980 na masharti yaliyo nyuma)

*Futa isiyotakiwa.

- 1. Ofisi iliyotolewa JIJI-DAR ES SALAAM
- 2. Nambari ya Ushuru wa Mapato 134-903-279
- 3. Leseni imetolewa kwa EMS GLOBAL LIMITED
kuendesha biashara ya BUSINESS CONSULTANCY
- katika Wilaya/Kanda* ya ILALA Mtaa SIMU
PLT 727 RITA TOWER
- 4. Ni ya Shina/Tawi*
Ada Sh. 200,000/= Nambari ya Stakabadhi 611577
ya tarehe 25/8/2022
- 5. Mpya/Inaendeleza* Muda wa Leseni Na. MPYA
ya tarehe
- (ii) Muda wa Leseni hii utaishia 24/8/2023



Tarehe 25/8/2022
0782589189
GP-Dsm
Sahihi na Muhuri wa Mtoaji Leseni